



## Hej, here I am!

Your order from Limmaland

## General information on application of decals

### PREPARE YOUR SURFACE

**Furniture decals:** Your IKEA furniture should be clean and free from dust and grease. Make sure you dry the surfaces before applying the stickers.

**Wall decals:** Please wait at least 3 weeks for newly painted walls to dry before applying the decals. Our wall films are not suitable for latex paints, siliconised or Teflon-coated surfaces.



### REMOVE BACKING PAPER

Small stickers can be fully removed in one from the backing paper. For large decals, start with peeling off a strip of approximately 10 cm of the backing paper. Therefore, you avoid the large adhesive surface sticking together. We recommend having a second person helping you with applying large decals.



### POSITION YOUR DECALS

Hold the decals on two corners and slowly attach it onto the surface to be covered. In case of bubbles or applying to the wrong place, you can slowly and carefully remove the decals at a 45° angle and reposition them.

**A tip:** In order to avoid overhang and simplify attachment, our decals are slightly smaller than the IKEA furniture surface. Please take this into account when applying the stickers.



### ATTACH YOUR DECALS

Now you can peel off the backing paper step by step and stick the decals. Bubbles can be removed by gently rubbing the decals with your hand or a cloth.



### VIDEO TUTORIAL

You can also watch our video tutorial on attaching and removing the decals. Go to:

[limmaland.com/anbringanleitung](https://limmaland.com/anbringanleitung)



## Additional information on the IKEA DUKTIG play kitchen

### BACKSPLASH

As the IKEA DUKTIG children's kitchen has no back panel, one solution would be to attach the decorative sticker to your wall for splash protection. Alternatively, you can make your own back panel by using a piece of chipboard with the dimensions 32 x 67,5 cm, stick the sticker onto the chipboard and attach the board with small nails to the back of the kitchen.

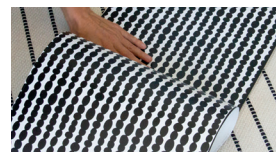
### STEP 1

Prepare your materials



### STEP 3

Attach the sticker



### STEP 5

Place the sticker onto the chipboard

### IMPORTANT NOTES ON REMOVING

For removal of the decals: Heat the decals with a hair dryer and pull it off carefully and slowly at a 45° angle. Please note that we do not have any information about your furniture's or wall's condition. Therefore, it is possible that paints, wallpapers, varnishes or other surfaces are damaged when the decals are being removed.

### STEP 2

Remove the covering that protects the adhesive side of the sticker



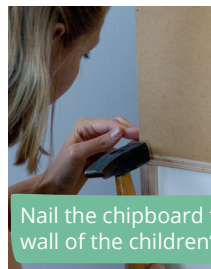
### STEP 4

Pierce in the holes for the door



### STEP 6

Nail the chipboard to the back wall of the children's kitchen



## SAFETY INSTRUCTIONS FOR WALL AND FURNITURE STICKERS WITH CE MARKING

Important - Read carefully - Please keep



WARNING:  
CHOKING HAZARD!

### PLEASE NOTE:

- All wall and furniture stickers are for children aged 3 years and over, and only suitable for indoor use. If you do not apply the decal immediately, please keep it out of the reach of children. Before being applied, the decal must not be used by children.
- To prevent injury, please add corner and/ or edge protectors to the furniture that you glue the stickers onto.
- Furniture should be anchored firmly to the wall to avoid risk of injury from tipping over, as children might use the furniture as a climbing aid.
- The self-adhesive stickers should only be stuck to furniture where sufficient space is available, e.g. the film must not protrude beyond the furniture edges.
- Our stickers may only be used under adult supervision and should be checked for any damage prior to use. The furniture should NOT be used if there are any damaged parts.
- If corners of the sticker have been damaged and removed from the furniture surface, the sticker no longer meets the safety requirements and must not be used any more.
- To reduce the risk of serious injury, children must be told that they can trap their fingers on drawers and must not climb on the furniture.
- If a sticker is detached and reattached to another wall or another piece of furniture, it will not fulfill the safety requirements and must not be used any more.

## HOORAY! ARE YOU AS EXCITED AS WE ARE?



Everyone from the Limmaland team wishes you lots of joy with your order.

Do you have any questions? Contact us at [hallo@limmaland.com](mailto:hallo@limmaland.com)!

Limmaland GmbH & Co. KG  
Marzellenstraße 43a  
50668 Köln  
Germany